



GREENE FOREST & FARM REALTY, LLC

Specializing in TIMBER & FARMLAND REAL ESTATE

640 Hwy. 49 North / P.O. Box 1596 / Americus, GA 31709

229-924-9048 / Fax: 229-928-8800

J&S PARTNERS, LLC TRACT

HUNTING & INVESTMENT PROPERTY – SUMTER CO., GEORGIA

GENERAL INFORMATION

The subject property totals 135 acres more or less. The property consists of mainly 1 year old planted pines. Has a large food plot and power line on southern end of the property.

LAND TYPES AND AMENITIES

The subject property was recently clear cut and replanted. It is located along a dirt road and is an excellent investment property. Included in the package are detailed maps showing the Tract for Sale.

TRACT LOCATION

The property is located in Sumter County, Georgia. It is located on Harry Priddy Rd. just off of Hwy 30. Included is a detailed road map showing property location.

SALE PRICE INFORMATION

The property is listed at \$1,250.00 per acre.

Contact Information:

Greene Forest & Farm Realty, LLC @ 229-924-9048 or contact us by cell at the numbers listed in the left hand column.

Information on the property may be found at:

www.greeneforestandfarm.com

A sister Company of United Forestry Consultants, Inc.

Jeff Greene
Broker
229-938-8103

Mack Greene
Salesperson
229-942-1515

Mason Greene
Salesperson
229-942-1698

Ken Coptias
Salesperson
229-815-0519

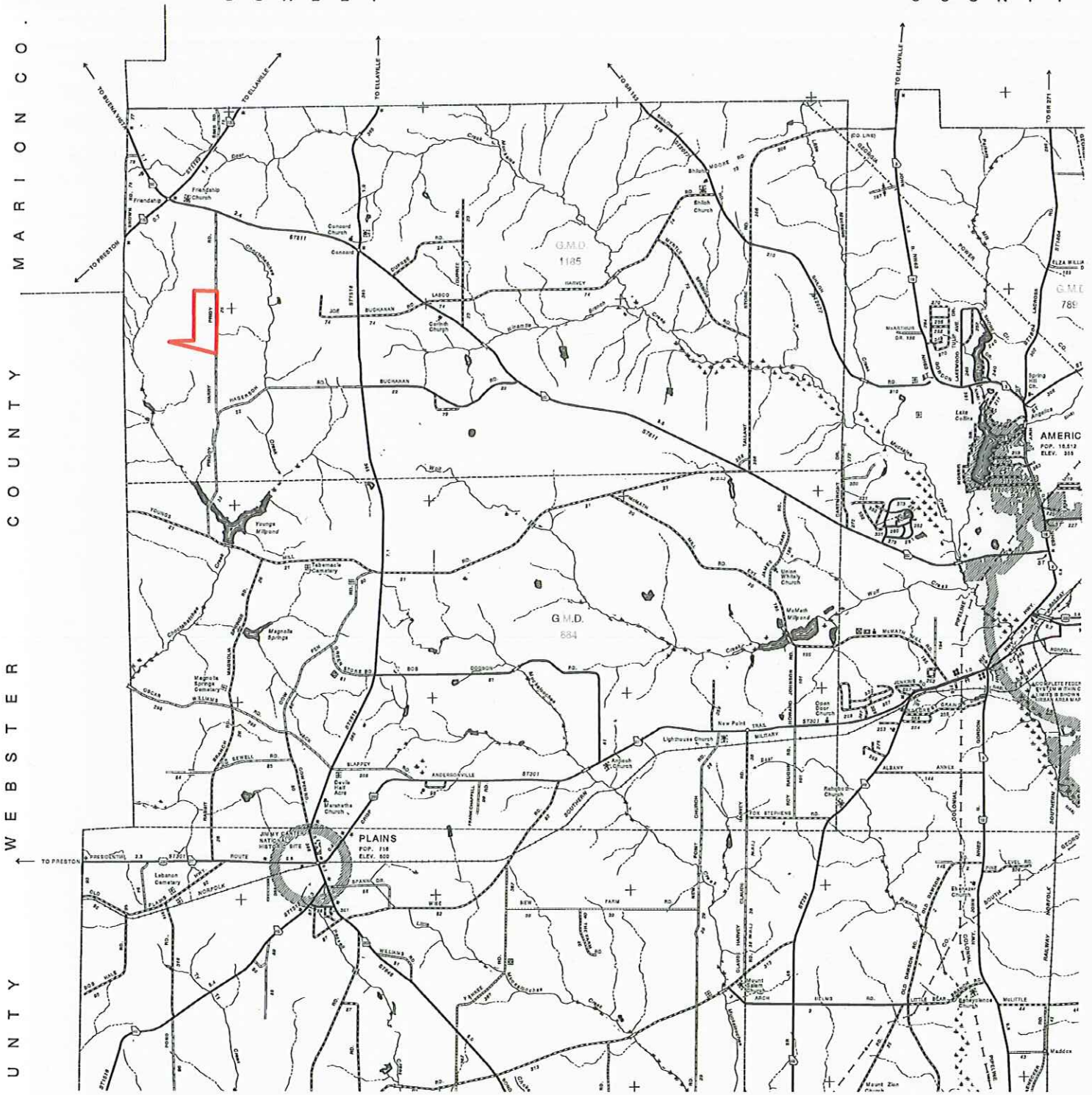
View Current
Listings at
www.greeneforestandfarm.com

"Let Our Experience Work For You"

- ARROW DENOTES TERMINUS
- SURFACE TRANSPORTATION PROGRAM ROUTES
- STATE ROUTE NUMBER, U.S. ROUTE NUMBER
- INTERSTATE ROUTE NUMBER
- INTERCHANGE
- COUNTY ROAD NUMBER
- CITY STREET NUMBER
- PUBLIC ROAD NUMBER
- POINTS BETWEEN WHICH MILEAGE IS MEASURED
- OIL OR GAS TANK
- PIPELINE, GAS
- PIPELINE, OIL
- ANIMAL HOSPITAL
- WINE
- QUARRY
- STAVEL OF
- DOMINANT WOOD STATION
- CULTURAL FEATURES SHOWN OUT OF POSITION
- OPERATING RAILROAD
- ABANDONED RAILROAD
- STATION OR STOP
- UNDERPASS ROAD BELOW
- OVERPASS ROAD ABOVE
- GARAGE CROSSING
- RAILROAD ON ROAD
- ELECTRIC INTERURBAN RAILROAD
- TRANSVERSE MERCATOR COORDINATES
- 876 800
- AIRPORTS
- MUNICIPAL FIELD
- COMMERCIAL OR MUNICIPAL FIELD WITH FACILITIES
- RUNWAYS, S. DOWN N POSITION
- LANDING AREA OR STRIP
- HELIPORT

SCHLEY COUNTY

COUNTY



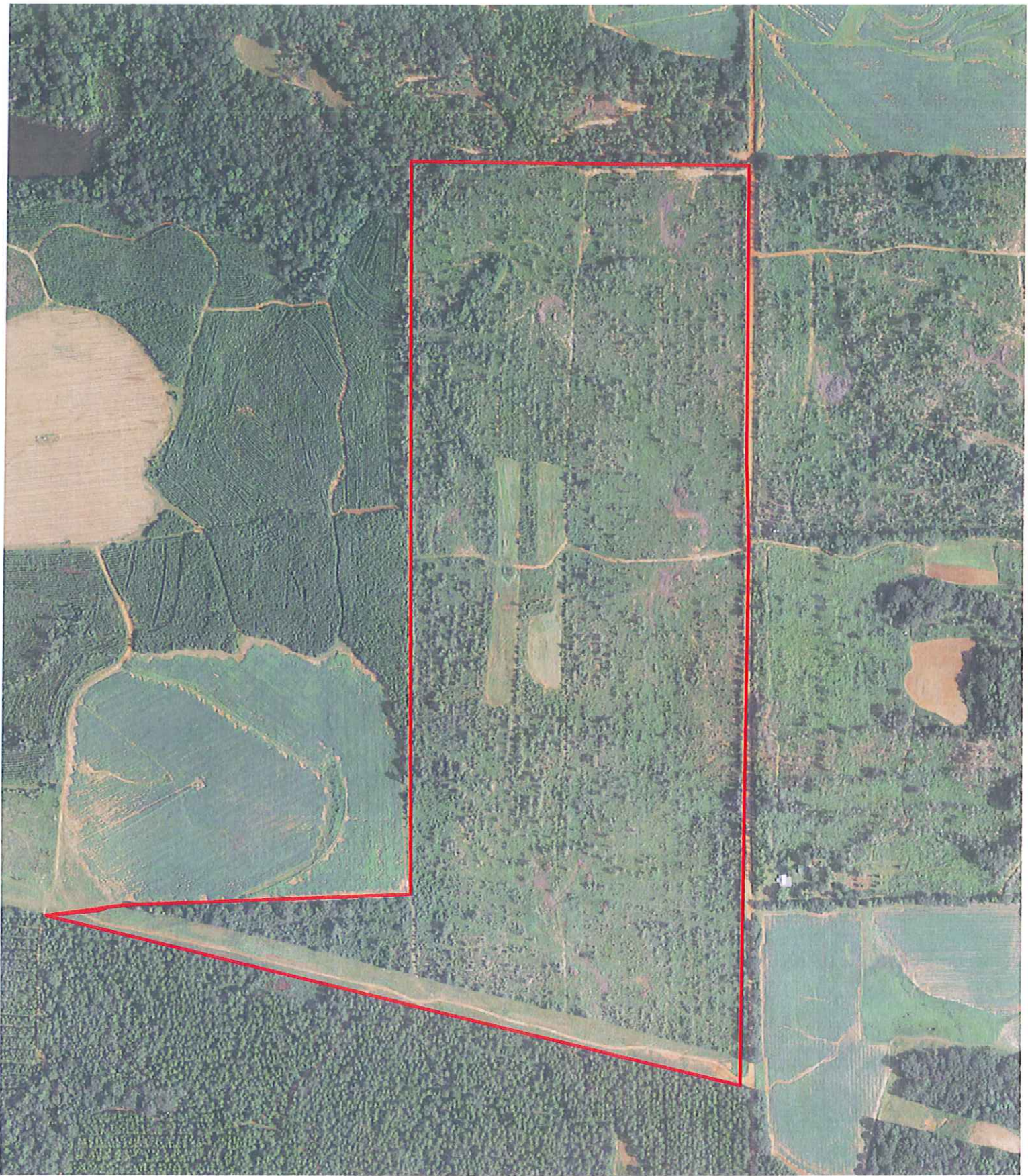
J&S Partners, LLC

 Property Boundary: +/- 135ac.



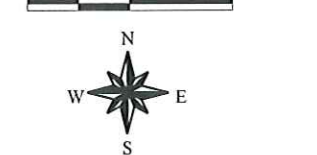
United Forestry Consultants, Inc.
 640 Hwy 49 North P.O. Box 1596
 Americus, GA 31709 (229) 928-3453
 FAX (229) 928-8800
 E mail: ufors@sovega.net
 www.unitedforestryconsultants.com
 "Managing Today for the Needs of Tomorrow"

Sumter County



J&S Partners, LLC

300 0 300 Feet



 Property Boundary: +/- 135ac.



United Forestry Consultants, Inc.

640 Hwy 49 North P.O. Box 1596

Americus, GA 31709 (229) 928-3453

FAX (229) 928-8800

E mail: ufors@sowega.net

www.unitedforestryconsultants.com

"Managing Today for the Needs of Tomorrow"





Sumter County




300 0 300 Feet



J&S Partners, LLC

-  Property Boundary: +/- 135ac.
-  Food Plot: +/- 8ac.
-  2013 Planted Pine: +/- 120ac.
-  Powerline: +/- 7ac.


United Forestry Consultants, Inc.
 640 Hwy 49 North P.O. Box 1596
 Americus, GA 31709 (229) 928-3453
 FAX (229) 928-8800
 E mail: ufors@sowega.net
 www.unitedforestryconsultants.com
 "Managing Today for the Needs of Tomorrow"

Sumter County